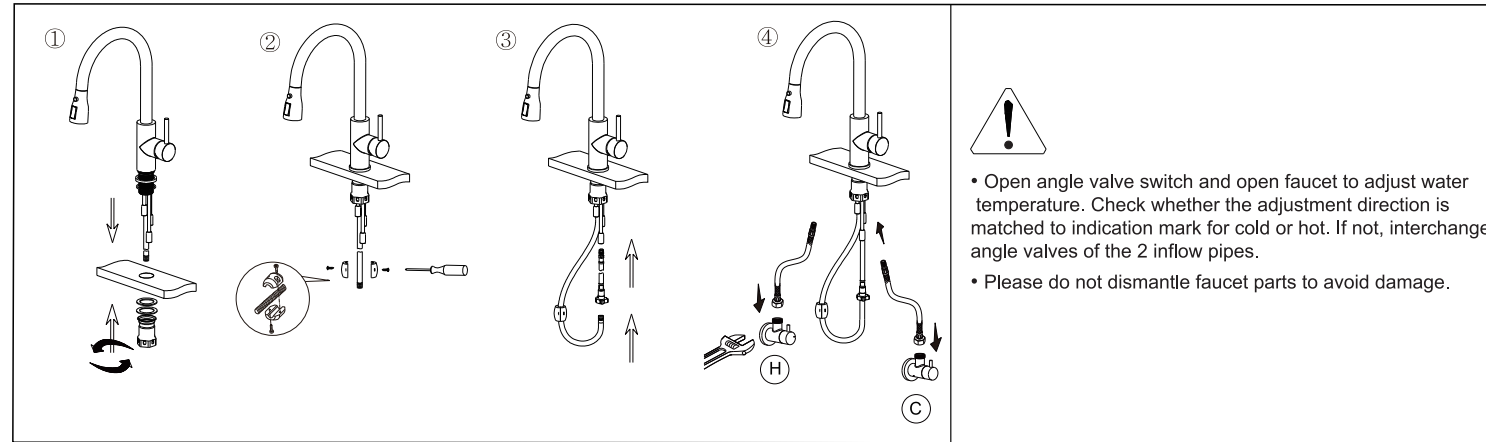
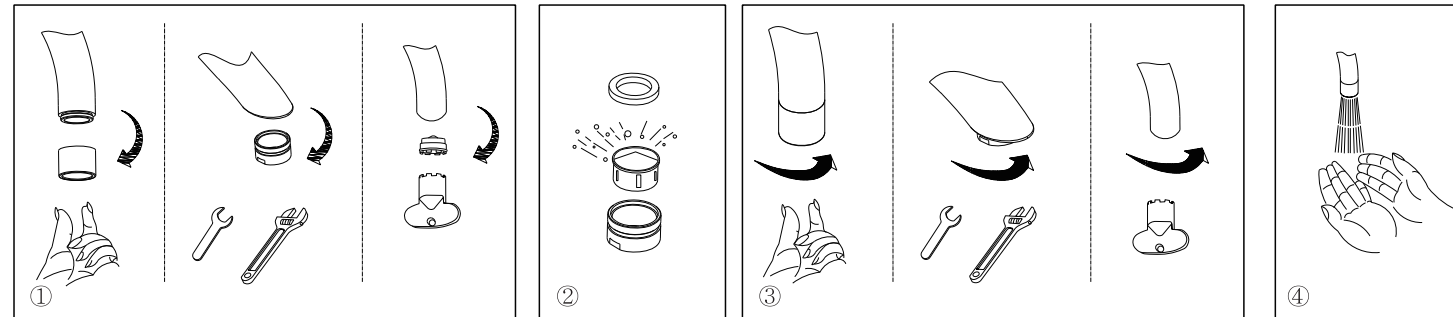


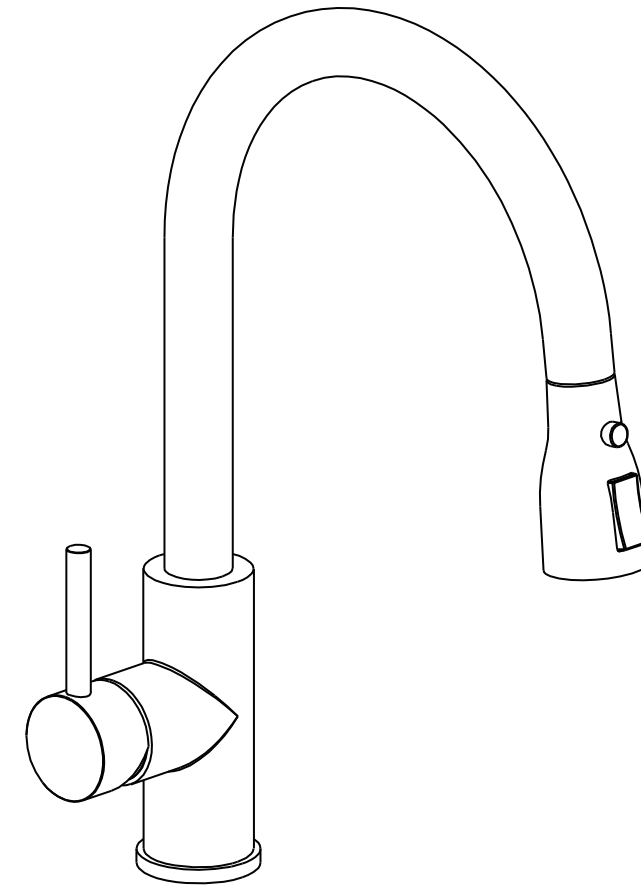
### Bottom installation of pull-out faucet



### How to clean the faucet nozzle



### Instruction Manual for Faucet



**Product part list**

① seal ring (1PC)	⑦ fastening sleeve (1PC)
② seal ring (1PC)	⑧ fastening ring (1PC)
③ spacer (1PC)	⑨ crescent rubber spacer (1PC)
④ crescent rubber spacer (1PC)	⑩ crescent spacer (1PC)
⑤ crescent spacer (1PC)	⑪ screw nut (2PC)
⑥ screw (2PC)	

• Parts & illustrations in the manual might differ from actual products. They are subject to the model your purchased.

**Regular faucet**

⑫  for some faucet models only

⑬  for some faucet models only

⑭

⑮

⑯

⑰  for some faucet models only

⑱

⑲

⑳

㉑

**Pull-out faucet**

⑫  OR ⑬

⑭  for some faucet models only

⑮

⑯

⑰  OR ⑱

⑲

⑳

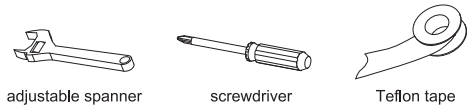
㉑

**Common parts**

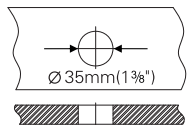
⑫ bubbler spanner A (1PC)	⑬ bubbler spanner B (1PC)	⑭ set square (1PC)
⑮ figure of eight holder (1PC)	⑯ spanner (1PC)	⑰ hammer (1PC)
⑱ spring (1PC)	⑲ sleeve spanner (1PC)	⑳ nut spanner (1PC)
㉑ inflow pipe (2PC)		

**BEFORE INSTALLATION**

• Recommended tools & materials



• Reference dimension of opening for countertop installation



**CAUTION**

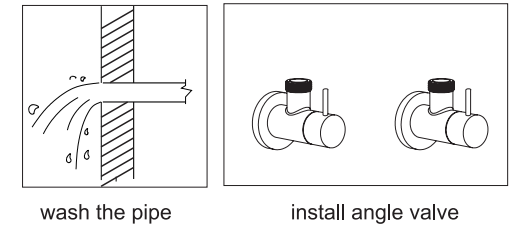
- The manual applies for most of the models, please follow the installation instructions according to your faucet.
- To ensure proper operation of your plumbing, it is essential to install these check valve assemblies onto your supply stops.

**Use and maintenance**

- If faucet flow is low, remove and clean aerator (Note: some models require wrench to remove aerator). Unscrew hose from spray head and clean debris.
- If faucet leaks from under handle, remove handle and cap. Using a wrench, ensure nut is tight.
- If leak persists—SHUT OFF WATER SUPPLY. Replace valve cartridge. When reinstalling parts, make sure nut is tightened securely with a wrench.
- If faucet leaks from spout outlet—SHUT OFF WATER SUPPLY. Replace valve cartridge. When reinstalling parts, make sure bonnet nut is tightened securely with a wrench.
- To keep faucet bright and clean, wash the surface frequently.
- The faucet's surface can be cleaned with cotton cloth or washed by gentle liquid cleaner or colorless glass cleaner. Do not use acid or abrasive cleaner.

**Technical requirements**

- Water pressure: 0.05Mpa~1.0Mpa
- If feeding water pressure exceeds 1.0Mpa, install a pressure-reducing valve.
- Supply water temperature: max 194°F.
- Please clean the pipes before installing angle valve, and make sure the water is clean to avoid blockage or leaks.



**How to install bottom of the faucet depending on your faucet type**

⚠

- Open angle valve switch and open faucet to adjust water temperature. Check whether the adjustment direction is matched to indication mark for cold or hot. If not, interchange angle valves of the 2 inflow pipes.
- Please do not dismantle faucet parts to avoid damage.